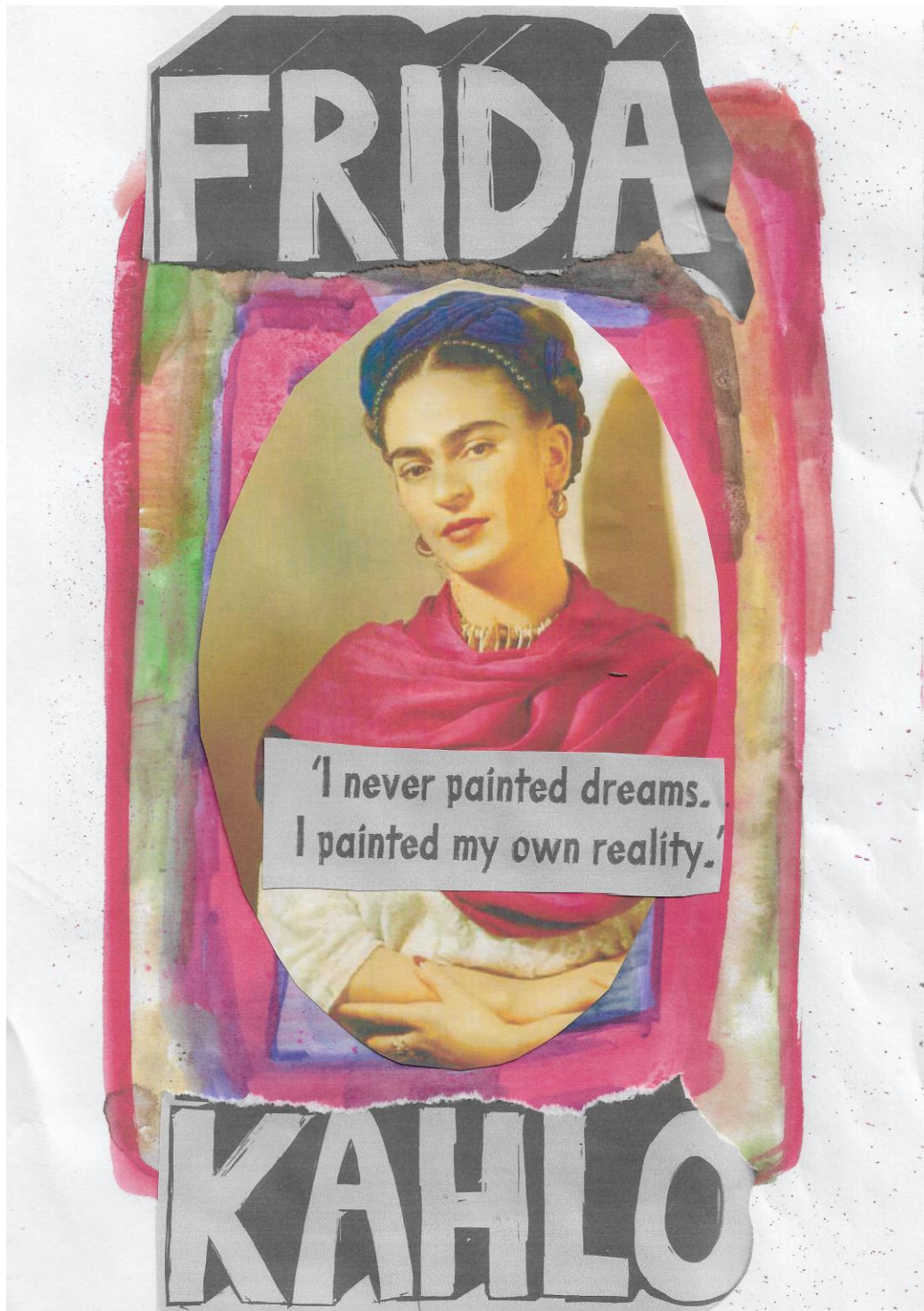


Magic Make- An Emotional Self Portrait

Inspired by Frida Kahlo.



SELF-PORTRAITS

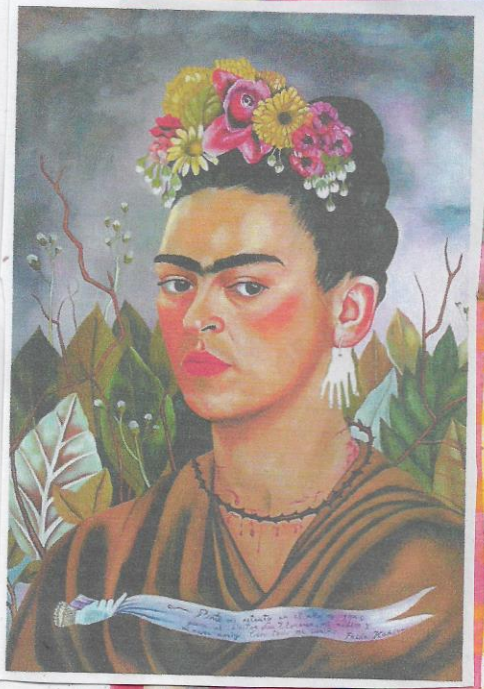
Look at the picture closely. What is Kahlo wearing?

What is she wearing around her neck?

How has she styled her hair?

What's in the background?

What else can you see in the picture?



SELF PORTRAIT (1940)

a record of her life.
Despite the hardships

"Painting completed my life."

DRAWING DATE

Short Intro

In this drawing date we're taking inspiration from tape graffiti artist Aakash Nihalani who creates amazing geometric optical illusions. We'll create a skyline using any tape we can find around the house – ask your grown ups for any DIY tapes they might have including electrical, gaffer and masking tapes!

<https://www.streetartbio.com/artists/aakash-nihalani/>



Materials Needed

- paper & pencil
- any kind of tape – washi tape, electrical tape, masking tape, cellotape, gaffer tape, decorative tape
- if you haven't got any tape try using felt pens and crayons

What's involved?

Use the tape to create buildings and skylines.

Handy tip

If you have trouble getting long bits of tape to behave when sticking them down, try creating a long line out of lots of short pieces put together.

Awesome Artist PAUL KLEE

